



Marbleizing made easy with Prang® Ambrite® chalk



Objectives

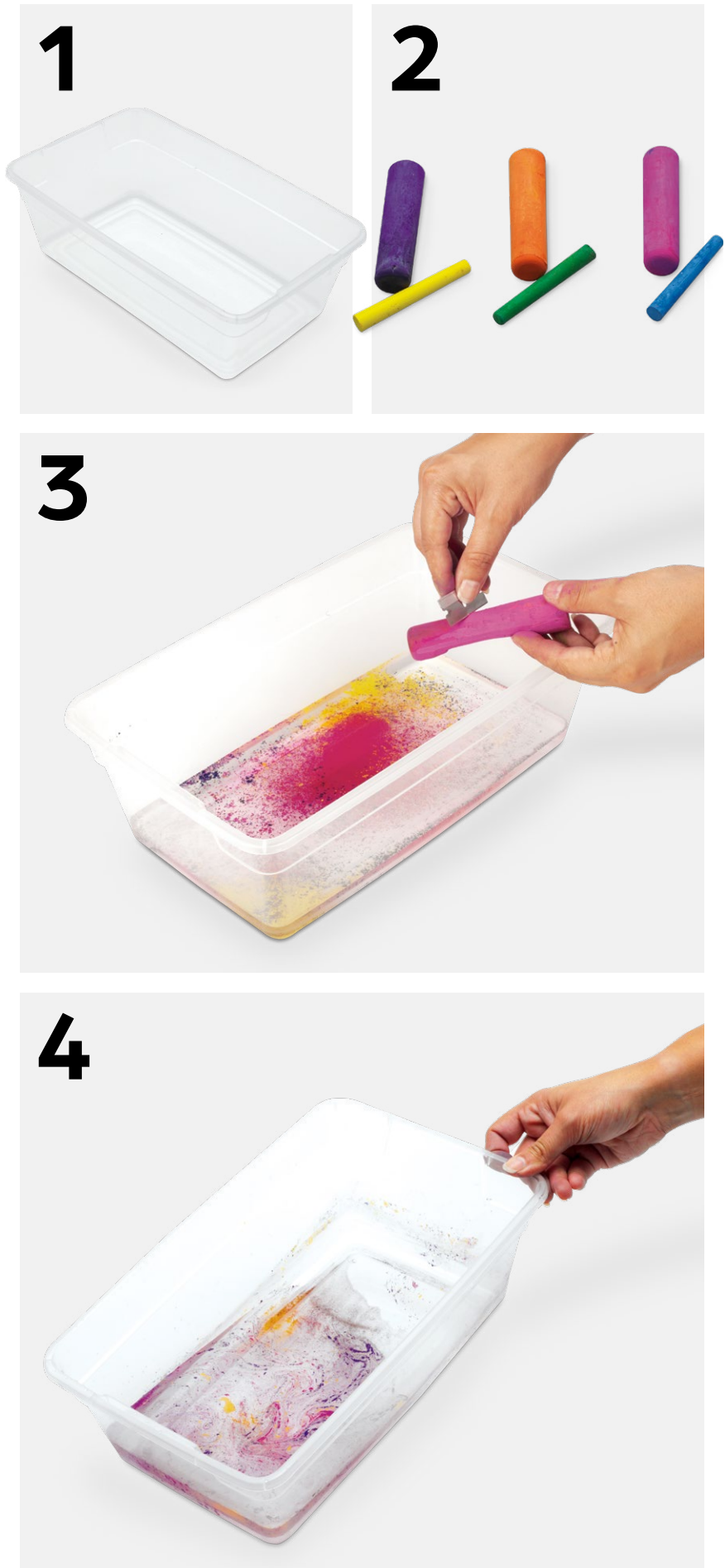
Students will...

- Be able to create beautiful marbled designs on a variety of papers, creating unique and colorful patterns
- Incorporate visual patterns and color blending with selective placement and control
- Demonstrate how fluids can be utilized to enhance color through a seemingly random process

Instructions

1. Place enough cool tap water in the pan to cover the bottom, about $\frac{1}{4}$ " to $\frac{1}{2}$ ".
2. Select three contrasting sticks of Prang® Ambrite® or Prang® Freart® chalk. You can use any three colors, but a careful selection of colors that complement each other is best (like red, orange, and contrasting violet).
3. Hold a stick of chalk over the pan of water. Vigorously scrape the side of the chalk with your straight-edge scraper and let the chalk dust fall onto the water surface. Scrape so that the flakes of chalk are more like dust, rather than chunks of chalk. More chalk dust is better than a little. Repeat with the next two sticks of colored chalk, letting one color fall onto the previous color.
4. Gently rock the pan by lifting one edge and dropping it back. This will cause the water to swirl the chalk floating on the surface. Watch the chalk dust form patterns on the water. If you want, you can use a pencil or stick to gently swirl the water.
5. Take a sheet of paper, cut it to the desired size, and position it over the pan. Select an area where the chalk has swirled in an interesting way. If you don't like the current pattern in the chalk, stop and add more chalk dust or lift the pan edge again to create a more attractive pattern. Once you are satisfied with the pattern on the water, place the paper on the water surface by laying one corner on the water first, followed by the rest of the paper.
6. This next step is very important. Remove the paper as soon as it contacts the water. Do not let it linger. The sooner it is removed, the better the chalk impression. Remove the paper with your fingers or tongs.
NOTE: Wear rubber gloves to keep your fingers from being stained by the chalk. Place your marbled paper onto a paper towel and let dry. Drying is usually very quick because the paper was not contacting the water long enough to saturate it.
7. Repeat steps 5 and 6 for a lighter, more pastel version of the pattern. Each successive marbleizing print will be lighter, as more chalk is removed from the water surface.

Start over with clean water and chalk.



5**7****6**

Follow-up ideas

- Depending on the marbled sheet size, several things can be done. If the finished sheet size is 8½" x 11", you may be able to print on it with an ink jet computer printer, or run it through a copy machine to print a message on it.
- Cut your paper to size and glue it to a book jacket or greeting card. Personalize it by drawing on the marbled print with colored pencils or markers.
- Spray the marbled paper with a fixative (like Krylon Workable Fixatif) to enhance the colors and preserve it.
- Marbleize the other side in a different color. Fold the paper in half to make a greeting card and write a message on the front or back.
- Create a resist. Use a white crayon to draw on the paper before you marbleize. Where you mark the paper with the crayon, the chalk will not stick. **EXAMPLE:** Draw your design with the crayon and dip the paper. The marbleizing will stain the paper, not your drawing. Experiment and have fun until you are satisfied with your technique.



Materials list

- Nasco White All Media Drawing Paper, 9" x 12", pkg. of 500 sheets ([9728257](#))
- Small pan (should be larger than the paper — chalk will stain the pan, so use an old pan or dedicate one for marbleizing)
- Prang® Ambrite® or Prang® Freart® colored chalk
 - Ambrite® pkg. of 12 sticks, each $\frac{3}{8}$ " x $\frac{3}{16}$ ", 12 colors ([9707122](#))
 - Ambrite® pkg. of 144 sticks, each $\frac{3}{8}$ " x $\frac{3}{16}$ ", 19 colors ([9707123](#))
 - Freart® pkg. of 12 sticks, each 4" x 1", 12 colors ([9712948](#))
- Krylon Workable Fixatif ([0900597](#))
- Scraper (any stiff or straight edge can be used)
- Paper towels
- Water