

# BUYING GUIDE

## Equip your classroom with human anatomy models

Understanding anatomy and physiology is critical for careers in a variety of fields, including healthcare, research, and education. Set students on the path to success by building their knowledge of human anatomy and body systems with the detailed anatomical models and other helpful teaching resources in this guide.

### Full skeleton

See, touch, and study the bone structure of the human body with detailed skeleton models.

#### Desktop and half-size

Product No.	Description
<a href="#">NE40636</a>	Miniature Human Skeleton Model - 17½"
<a href="#">SB22564</a>	Economy Skeleton - 33½"
<a href="#">SB52181</a>	Half-Size Flexible Skeleton with Muscle Insertions - 33"

#### Full-size

Product No.	Description
<a href="#">SB02011</a>	Human Skeleton - 67"
<a href="#">SB41407</a>	3B Scientific Stan the Standard Skeleton - 66"

#### Full-size with muscles and ligaments

Product No.	Description
<a href="#">SB14921</a>	3B Scientific Skeleton Model with Muscles and Ligaments - 65"
<a href="#">SB14901</a>	Advanced Skeleton with Muscle - 65"
<a href="#">SB51061</a>	Full-Size Flexible Skeleton with Muscles - 67"
<a href="#">SB49572</a>	Full-Size Human Skeleton with Muscles and Ligaments - 66"

#### Disarticulated

Product No.	Description
<a href="#">SB13487</a>	3B Disarticulated Human Skeleton Model, Complete with 3-Part Skull - 53 Pieces
<a href="#">SB49201</a>	Disarticulated Human Skeleton

#### Accessories

Product No.	Description
<a href="#">SB45480</a>	Skeleton Dust Cover, Black, 65" x 24¾"
<a href="#">SB51049</a>	Dust Cover for Skeleton, Blue with Transparent Window, 65" x 24¾"



SB52181



SB22564



SB49572



SB49201

Spine

Choose between solid and flexible models to show how the vertebrae, discs, and other parts of the spine work together.

Spine	
Product No.	Description
NE40271	3B Scientific Flexible Human Spine Model - 29"
SB52565	Human Small Spine Model (14") with Fold-Out Guide

Includes free access to the 3B Smart Anatomy Course



Hands and wrists

Choose from solid models that show all the bones and a flexible model that also shows ligaments and muscles.

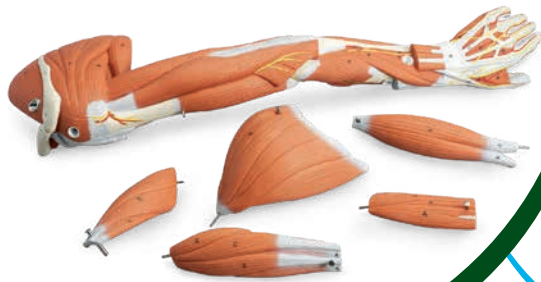
Hands and wrists	
Product No.	Description
SB35471	Hand/Wrist Model
NE40265	3B Scientific Hand Skeleton Model with Ligaments and Muscles

Knees, ankles, and feet

Examine every detail from the knees down to the toes to see how they work collectively.

Knees, ankles, and feet	
Product No.	Description
SB35472	Foot/Ankle Model
NE40266	3B Scientific Foot Skeleton Model with Ligaments and Muscles
SB41404	Working Knee Joint Model
SB35430	Basic Knee Model





SB41513



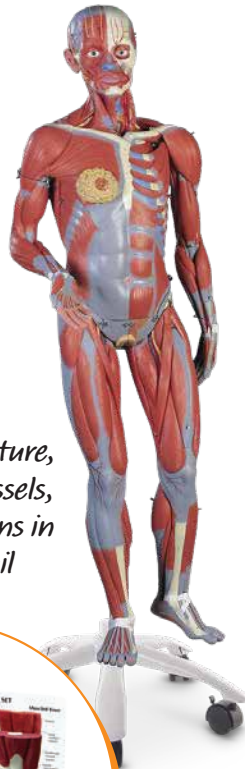
SB41402

## Muscular, circulatory, and nervous systems

Use these visuals in your classroom to show students the varied shape and size of the muscles in the human body.

*Depicts musculature, major nerves, vessels, tissues, and organs in exquisite detail*

Muscular, circulatory, and nervous systems	
Product No.	Description
SB41424	Deluxe Dual Sex Muscular Figure (45-Part) - 54"
SB27605	American 3B Muscular Figure (¼ Life-Size) - 22½"
SB41436	Circulatory System - 31½"
SB47324	Mini-Muscle Joint Set - 8¼" x 6¼"
SB35469	Muscle Shoulder Model - 5½" x 6" x 6"
SB41402	Working Shoulder Joint - 6¼" x 4¾" x 7¾"
LA00129	Arm Muscle (7-Part) - 29¼" x 8" x 4¾"
SB41512	Dissectible Muscled Arm (6-Part) - 23⅝" x 7⅞" x 7⅞"
SB41513	Dissectible Muscled Leg (9-Part) - 30¼" x 10¼" x 10¼"
LA00131	Leg Muscle (13-Part) - 43¼" x 7½" x 5¾"



SB41424



SB47324

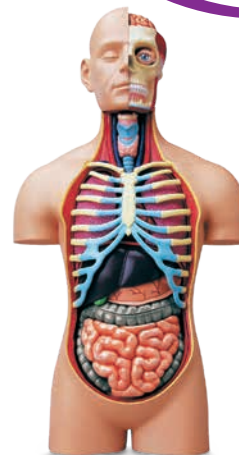
## Torso

Find the right-size torso model to show your students the major body systems and how they all fit together.

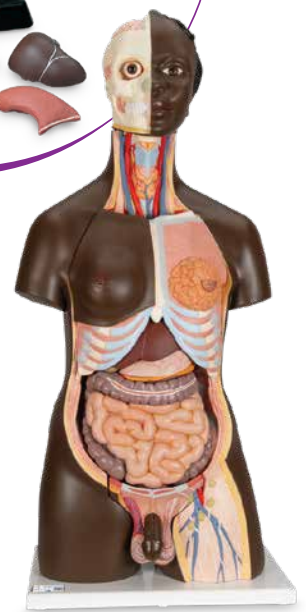
Torso	
Product No.	Description
SB25196	Sexless Human Torso - 10"
LY01011	3B Scientific® Mini-Torso (12-Part)
SB25198	Genderless Human Torso (12-Part) - 20"
SB50772	4D Human™ Deluxe Torso Model - 15"
SB41420	Classic 3B Scientific® Unisex Torso (14-Parts) - 34"
SB48432	Economy Sexless Human Torso with Open Back - 34"
SB41506	Classic 3B Scientific® Unisex Torso with Opened Neck and Back (18-Part) - 34"
SB25326	American Deluxe Dual Sex Torso, 3-Part Head - 34"
SB41422	Deluxe Dual-Sex Torso with Opened Neck and Back (28-Parts)
SB41423	Deluxe Dual-Sex Muscle Torso with Opened Neck and Back (31-Parts)
SB49199	Dual-Sex Human Torso with Open Back (27-Part)
SB25195	Human Torso - 20-Part - 33½"
NE40364	3B Scientific Deluxe Torso Model - Dual Sex - African - 34"
NE40365	3B Scientific Deluxe Torso Model - Dual Sex - Asian - 34"



SB25196

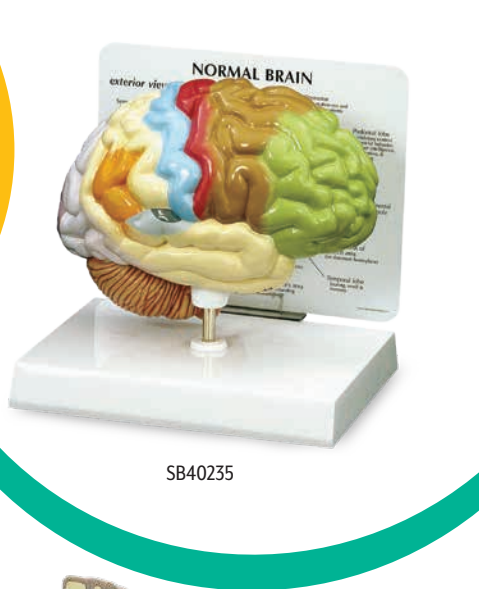
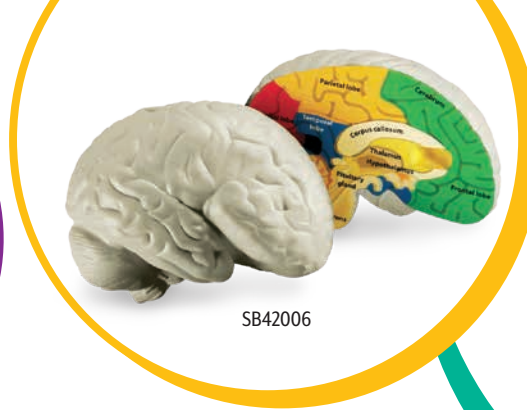


SB50772



NE40364

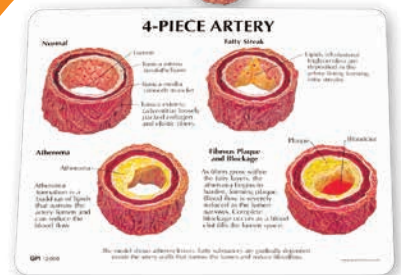
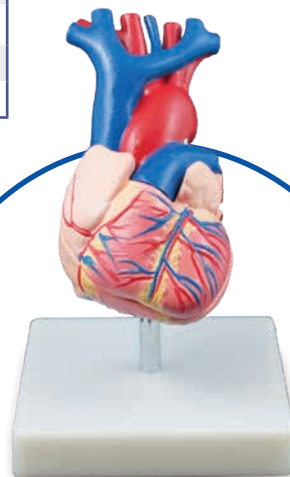




## Skull and brain

Make it easier to study the complexity of the skull and brain.

Skull and brain	
Product No.	Description
SB50958	Fetal Skull
SB25937	Economy Human Skull - 5½" x 8" x 6"
LA00176	Numbered Human Skull Model - 8½" x 5½" x 6¼"
SB33945	Classic Skull - 9" x 6" x 6¾"
SB50960	Colored Human Skull - 8" x 8" x 5½"
NE40273	3B Scientific Human Skull with Facial Muscles
LA00140	Half-Head Model - 8" x 6" x 11½"
SB42006	Brain Cross-Section Model
SB40235	Half Brain Model - 6½" x 5" x 2½"
LA00236	Regional Brain (2-Part) - 6¼" x 8" x 5½"
SB35428	Brain Model - 5" x 6¾" x 5"
SB51054	Human Skull with Brain Model
LA00239	Life-Size Brain with Arteries
SB51339	Human Brain Model (8-Part)

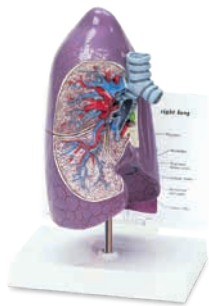


## Heart and vascular system

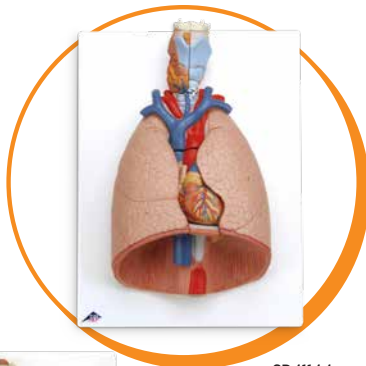
Use these mini- to jumbo-size models to show your students how blood is pumped throughout the body.

Heart and vascular system	
Product No.	Description
SB42005	Cross-Section Heart Model
SB42007	Cross-Section Heart & Brain Model Set
SB25200	Life-Size Heart Model - 6¼" x 3½" x 3¼"
SB32595	Heart Model (2-Part) - 3¾" x 4" x 4¼"
SB41508	Classic Heart - 2 Part
LA00108	Jumbo Heart Model (3-Part) - 9½" x 9½" x 11"
SB41433	Heart with Esophagus and Trachea Model - 12½" x 7" x 7"
SB44893	Mini Heart Set Models - Set of 3
SB48204	Pumping Heart Model - 12"L x 11"W x 5"D
SB42963	Artery Model - Set of 4 - 3½" x 1½"D





SB28414



SB41144



SB41444

## Lungs

Delve into the organs that make it possible for humans to draw in the oxygen we need to survive.

### Lungs

Product No.	Description
<a href="#">SB28414</a>	Normal Lung Model - 9" x 5½" x 5¼"
<a href="#">SB41444</a>	Life-Size Lung Model (5 Part) - 4¾" x 11" x 14½"
<a href="#">SB41144</a>	Deluxe Lung Model with Larynx (7 Part) - 12¼" x 16" x 4¾"

## Digestive, excretory, and endocrine systems

Show students how an array of organs work together to help us intake food, create and use energy, and more.

### Digestive, excretory, and endocrine systems

Product No.	Description
<a href="#">LA00203</a>	Digestive System Model (3-Part) - 35½" x 12" x 5"
<a href="#">LA00204</a>	Life-Size Stomach Model (2-Part) - 4⅞" x 5⅞" x 2¼"
<a href="#">SB35434</a>	Colon Model - 6" x 2½" x 7¾"
<a href="#">SB45695</a>	GI Tract Anatomy Model - 6" x 2½" x 7¾"
<a href="#">SB46335</a>	Type 2 Diabetes Models - 10" Tall
<a href="#">SB46336</a>	Liver Model with Pathologies - 8" x 4½" x 5½"
<a href="#">SB46337</a>	Kidney Model with Pathologies - 3¾" x 2½" x 6½"
<a href="#">WA21315</a>	Kidney Model - 4" x 2½" x 6½"
<a href="#">SB41510</a>	Digestive System (3-Part) - 31⅞" x 13" x 3⅞"
<a href="#">SB47397</a>	Kidneys and Blood Filtration Kit
<a href="#">SB49200</a>	Urinary System Model - 14½" x 9" x 5"



SB19256



SB50766



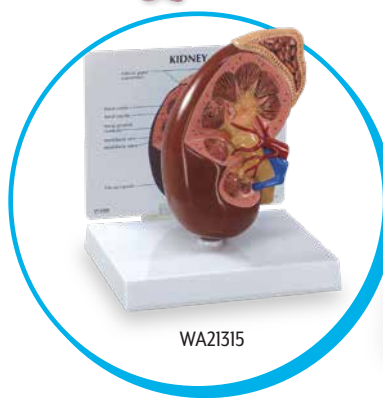
SB19254



LA00203



SB45695



WA21315



SB46335

## Eyes and ears

Study in detail how these specialized organs take in sensory information and transmit it to the nervous system.

### Eyes and ears

Product No.	Description
<a href="#">SB19256</a>	Classic Eye (6-Part) - 3½" x 3½" x 5⅞"
<a href="#">SB50766</a>	4D Human™ Eyeball Model - 4½"
<a href="#">SB32980</a>	Ear Model - 3¾" x 2½" x 2¾"
<a href="#">SB19254</a>	Human Ear Anatomical Model - 13½" x 6¼" x 7⅞"
<a href="#">SB50767</a>	4D Human™ Ear Model - 5"



## Teeth

Use these detailed training models to give students a close look into dental health and development.

Teeth	
Product No.	Description
<a href="#">SB48717</a>	Clear Human Jaw with Teeth - 3½" x 2¾" x 2½"
<a href="#">NE40272</a>	3B Scientific Human Tooth Models - Set of 5



SB48717



NE40272



NE40268

SB46482

## Skin

Show your students the layers and functions of the largest organ in the human body.

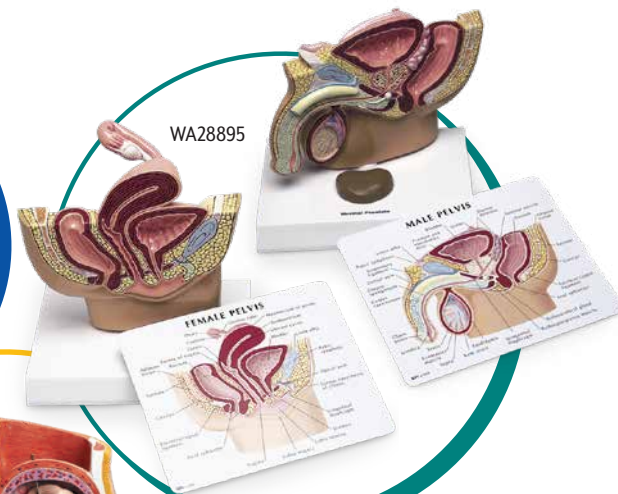
Skin	
Product No.	Description
<a href="#">NE40267</a>	3B Scientific Microscopic Skin, Hair, & Nail Model
<a href="#">SB46482</a>	Skin Burn/Normal Model - 6" x 2½" x 4"
<a href="#">SB49202</a>	Skin Model - 11½" x 8½" x 10"
<a href="#">NE40268</a>	3B Scientific Human Skin Model 80 Times Magnified



SB47759



SB32704



WA28895

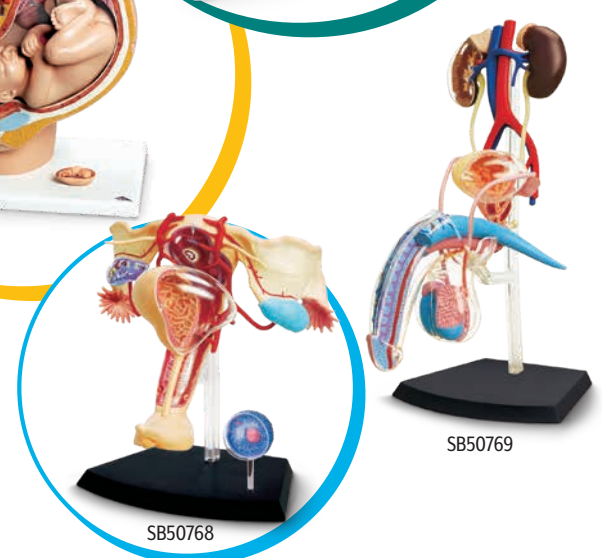
## Reproduction

Learn how the male and female reproductive systems work and about each stage of fetal development.

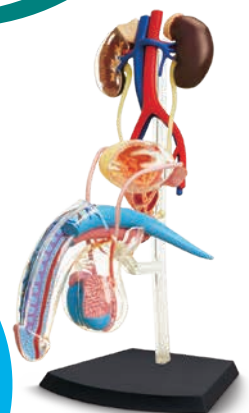
Reproduction	
Product No.	Description
<a href="#">SB32704</a>	Uterus/Fetus Model Set
<a href="#">SB35435</a>	Uterus Anatomy Model
<a href="#">SB23480</a>	Pregnant Woman Model
<a href="#">SB47759</a>	Fetus Development - Set of 8 Models - 4½" x 6" x 8"
<a href="#">SB50957</a>	Human Ovary Model
<a href="#">WA28895</a>	Human Pelvis Complete Model Set
<a href="#">SB32597</a>	Female Pelvis Model - 6¼" x 2¾" x 5½"
<a href="#">SB32598</a>	Male Pelvis Model - 6¼" x 2¾" x 5½"
<a href="#">SB50768</a>	4D Human™ Female Reproductive System Model - 8"
<a href="#">SB50769</a>	4D Human™ Male Reproductive System Model - 8"



SB23480



SB50768



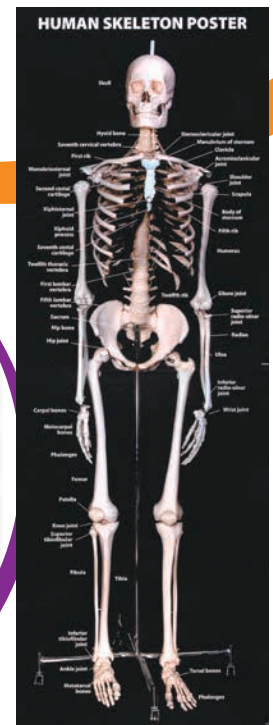
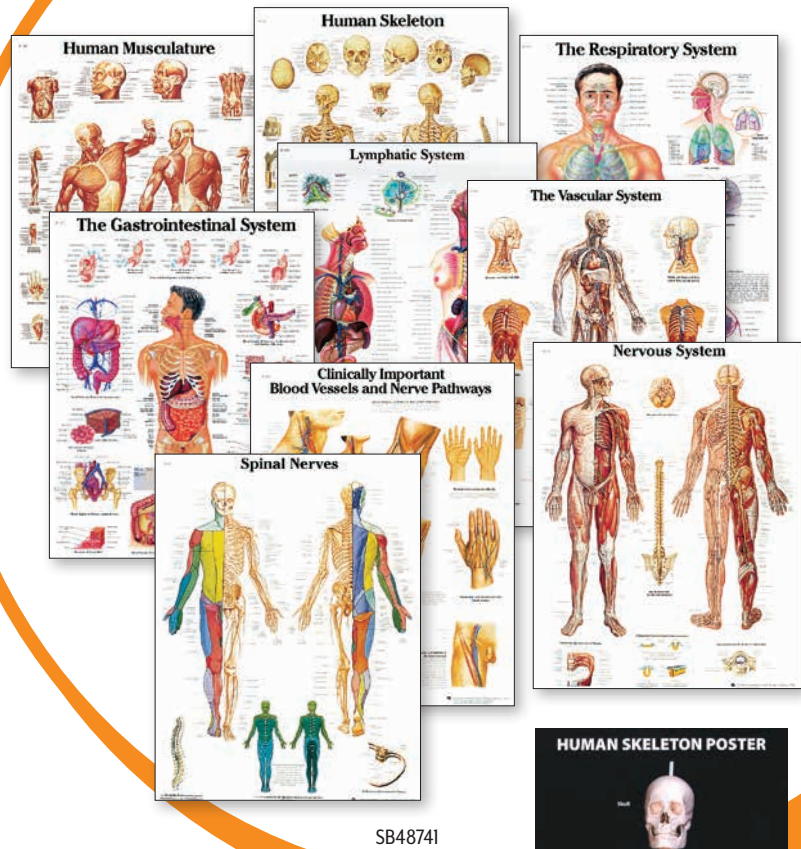
SB50769



## Resources

Supplement lessons with detailed charts, posters, and more.

Resources	
Product No.	Description
<a href="#">SB42082</a>	The Human Body Learning Charts Combo Pack - 17" x 22" - Set of 7
<a href="#">SB35256</a>	Five Senses Posters - 17" x 22" - Set of 10
<a href="#">SB33791</a>	Blueprint for Health Charts - 20" x 26" - Set of 9
<a href="#">SB47571</a>	Magnetic Human Body - 3"H - 17 Pieces
<a href="#">SB21143</a>	Sex Education Charts - 36" x 44" - Set of 9
<a href="#">SB28462</a>	Human Skeleton Photo - 54" Tall
<a href="#">SB46246</a>	Elementary Anatomy Posters - Set of 8
<a href="#">SB48741</a>	3B Scientific® Anatomical Charts - Set of 9
<a href="#">SB41514</a>	3B Scientific® Anatomical Chart for Human Skeleton
<a href="#">SB41515</a>	3B Scientific® Anatomical Chart for Human Musculature
<a href="#">SB41519</a>	3B Scientific® Anatomical Chart for the Vascular System
<a href="#">SB41520</a>	3B Scientific® Anatomical Chart for Blood Vessels and Nerve Pathways
<a href="#">SB41521</a>	3B Scientific® Anatomical Chart for the Lymphatic System
<a href="#">SB41522</a>	3B Scientific® Anatomical Chart for the Gastrointestinal System
<a href="#">SB41523</a>	3B Scientific® Anatomical Chart for the Nervous System
<a href="#">SB41524</a>	3B Scientific® Anatomical Chart for Spinal Nerves
<a href="#">SB50334</a>	QuickStudy® Anatomy I Guide



## Experience the ease of a school-focused ordering process

Get the help you need to navigate bids, quotes, and co-op purchasing and qualify for discount pricing.

Our friendly staff will walk you through the ordering process, provide easy-to-understand billing, and offer individualized support.

Contact us at 1.800.558.9595 or [custserv@nascoeducation.com](mailto:custserv@nascoeducation.com)