



BUYING GUIDE

Equip your classroom with human anatomy models

Understanding anatomy and physiology is critical for careers in a variety of fields, including healthcare, research, and education. Set students on the path to success by building their knowledge of human anatomy and body systems with the detailed anatomical models and other helpful teaching resources in this guide.

Full skeleton

See, touch, and study the bone structure of the human body with detailed skeleton models.

Desktop and half-size

| Product No. | Description |
|-------------------------|--|
| NE40636 | Miniature Human Skeleton Model - 17½" |
| SB22564 | Economy Skeleton - 33½" |
| SB52181 | Half-Size Flexible Skeleton with Muscle Insertions - 33" |

Full-size

| Product No. | Description |
|-------------------------|--|
| SB02011 | Human Skeleton - 67" |
| SB41407 | 3B Scientific Stan the Standard Skeleton - 66" |

Full-size with muscles and ligaments

| Product No. | Description |
|-------------------------|---|
| SB14921 | 3B Scientific Skeleton Model with Muscles and Ligaments - 65" |
| SB14901 | Advanced Skeleton with Muscle - 65" |
| SB51061 | Full-Size Flexible Skelton with Muscles - 67" |
| SB49572 | Full-Size Human Skeleton with Muscles and Ligaments - 66" |

Disarticulated

| Product No. | Description |
|-------------------------|--|
| SB13487 | 3B Disarticulated Human Skeleton Model, Complete with 3-Part Skull - 53 Pieces |
| SB49201 | Disarticulated Human Skeleton |

Accessories

| Product No. | Description |
|-------------------------|---|
| SB45480 | Skeleton Dust Cover, Black, 65" x 24¾" |
| SB51049 | Dust Cover for Skeleton, Blue with Transparent Window, 65" x 24¾" |



SB52181



SB22564



SB49572



SB49201

Spine

Choose between solid and flexible models to show how the vertebrae, discs, and other parts of the spine work together.

| Spine | |
|-------------|---|
| Product No. | Description |
| NE40271 | 3B Scientific Flexible Human Spine Model - 29" |
| SB52565 | Human Small Spine Model (14") with Fold-Out Guide |

Includes free access to the 3B Smart Anatomy Course



Hands and wrists

Choose from solid models that show all the bones and a flexible model that also shows ligaments and muscles.

| Hands and wrists | |
|------------------|--|
| Product No. | Description |
| SB35471 | Hand/Wrist Model |
| NE40265 | 3B Scientific Hand Skeleton Model with Ligaments and Muscles |

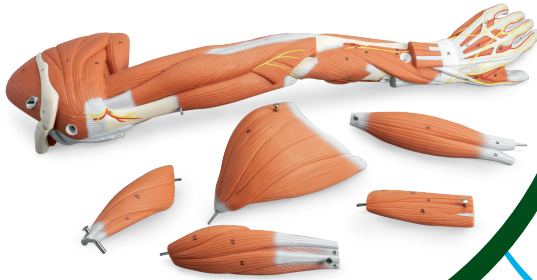


Knees, ankles, and feet

Examine every detail from the knees down to the toes to see how they work collectively.

| Knees, ankles, and feet | |
|-------------------------|--|
| Product No. | Description |
| SB35472 | Foot/Ankle Model |
| NE40266 | 3B Scientific Foot Skeleton Model with Ligaments and Muscles |
| SB41404 | Working Knee Joint Model |
| SB35430 | Basic Knee Model |

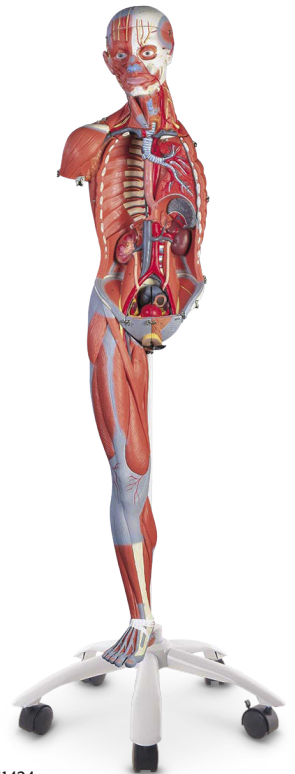




SB41513



SB41402



SB41424



SB47324

Muscular, circulatory, and nervous systems

Use these visuals in your classroom to show students the varied shape and size of the muscles in the human body.

Depicts musculature, major nerves, vessels, tissues, and organs in exquisite detail

| Muscular, circulatory, and nervous systems | |
|--|--|
| Product No. | Description |
| SB41424 | Deluxe Dual Sex Muscular Figure (45-Part) - 54" |
| SB27605 | American 3B Muscular Figure (1/4 Life-Size) - 22 1/2" |
| SB41436 | Circulatory System - 31 1/2" |
| SB47324 | Mini-Muscled Joint Set - 8 1/4" x 6 1/4" |
| SB35469 | Muscled Shoulder Model - 5 1/2" x 6" x 6" |
| SB41402 | Working Shoulder Joint - 6 1/4" x 4 3/4" x 7 3/4" |
| LA00129 | Arm Muscle (7-Part) - 29 1/4" x 8" x 4 3/4" |
| SB41512 | Dissectible Muscled Arm (6-Part) - 23 5/8" x 7 1/8" x 7 1/8" |
| SB41513 | Dissectible Muscled Leg (9-Part) - 30 1/4" x 10 1/4" x 10 1/4" |
| LA00131 | Leg Muscle (13-Part) - 43 1/4" x 7 1/2" x 5 3/4" |

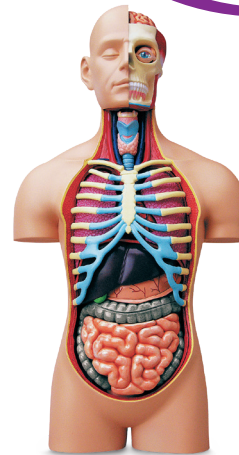
Torso

Find the right-size torso model to show your students the major body systems and how they all fit together.

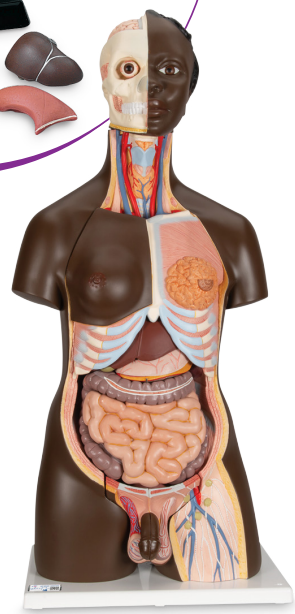
| Torso | |
|-------------|---|
| Product No. | Description |
| SB25196 | Sexless Human Torso - 10" |
| LY01011 | 3B Scientific® Mini-Torso (12-Part) |
| SB25198 | Genderless Human Torso (12-Part) - 20" |
| SB50772 | 4D Human™ Deluxe Torso Model - 15" |
| SB41420 | Classic 3B Scientific® Unisex Torso (14-Parts) - 34" |
| SB48432 | Economy Sexless Human Torso with Open Back - 34" |
| SB41506 | Classic 3B Scientific® Unisex Torso with Opened Neck and Back (18-Part) - 34" |
| SB25326 | American Deluxe Dual Sex Torso, 3-Part Head- 34" |
| SB41422 | Deluxe Dual-Sex Torso with Opened Neck and Back (28-Parts) |
| SB41423 | Deluxe Dual-Sex Muscle Torso with Opened Neck and Back (31-Parts) |
| SB49199 | Dual-Sex Human Torso with Open Back (27-Part) |
| SB25195 | Human Torso - 20-Part - 33 1/2" |
| NE40364 | 3B Scientific Deluxe Torso Model - Dual Sex - African - 34" |
| NE40365 | 3B Scientific Deluxe Torso Model - Dual Sex - Asian - 34" |



SB25196



SB50772



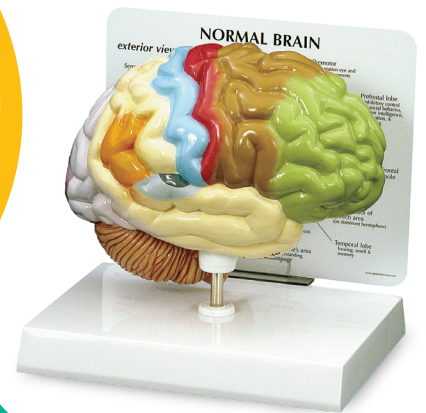
NE40364



SB33945



SB42006



SB40235

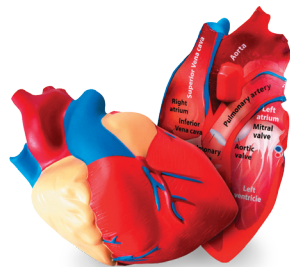
Skull and brain

Make it easier to study the complexity of the skull and brain.

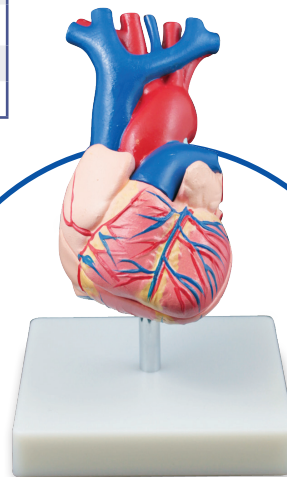
| Skull and brain | |
|-----------------|---|
| Product No. | Description |
| SB50958 | Fetal Skull |
| SB25937 | Economy Human Skull - 5½" x 8" x 6" |
| LA00176 | Numbered Human Skull Model - 8⅝" x 5½" x 6¼" |
| SB33945 | Classic Skull - 9" x 6" x 6¾" |
| SB50960 | Colored Human Skull - 8" x 8" x 5½" |
| NE40273 | 3B Scientific Human Skull with Facial Muscles |
| LA00140 | Half-Head Model - 8" x 6" x 11½" |
| SB42006 | Brain Cross-Section Model |
| SB40235 | Half Brain Model - 6½" x 5" x 2½" |
| LA00236 | Regional Brain (2-Part) - 6¼" x 8" x 5½" |
| SB35428 | Brain Model - 5" x 6¾" x 5" |
| SB51054 | Human Skull with Brain Model |
| LA00239 | Life-Size Brain with Arteries |
| SB51339 | Human Brain Model (8-Part) |



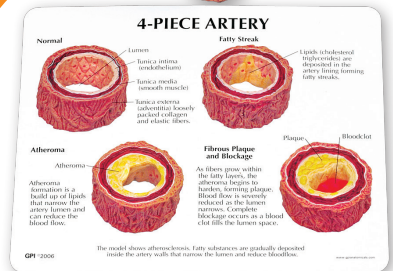
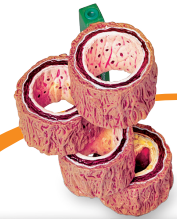
SB35428



SB42005



SB25200



SB42963

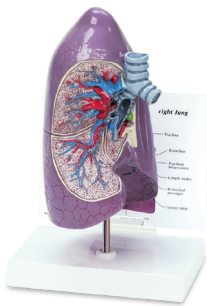
Heart and vascular system

Use these mini- to jumbo-size models to show your students how blood is pumped throughout the body.

| Heart and vascular system | |
|---------------------------|---|
| Product No. | Description |
| SB42005 | Cross-Section Heart Model |
| SB42007 | Cross-Section Heart & Brain Model Set |
| SB25200 | Life-Size Heart Model - 6¼" x 3½" x 3¼" |
| SB32595 | Heart Model (2-Part) - 3¾" x 4" x 4¼" |
| SB41508 | Classic Heart - 2 Part |
| LA00108 | Jumbo Heart Model (3-Part) - 9½" x 9½" x 11" |
| SB41433 | Heart with Esophagus and Trachea Model - 12⅝" x 7" x 7" |
| SB44893 | Mini Heart Set Models - Set of 3 |
| SB48204 | Pumping Heart Model - 12"L x 11"W x 5"D |
| SB42963 | Artery Model - Set of 4 - 3½" x 1⅝"D |



LA00108



SB28414



SB41144



SB41444

Digestive, excretory, and endocrine systems

Show students how an array of organs work together to help us intake food, create and use energy, and more.

Digestive, excretory, and endocrine systems

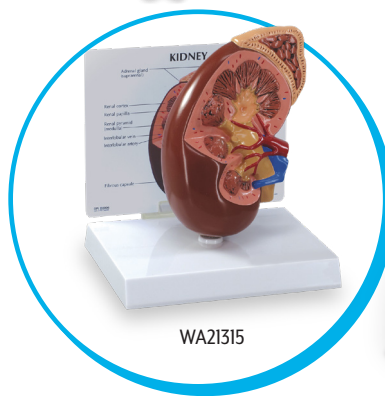
| Product No. | Description |
|-------------|--|
| LA00203 | Digestive System Model (3-Part) - 35½" x 12" x 5" |
| LA00204 | Life-Size Stomach Model (2-Part) - 4⅞" x 5⅞" x 2¼" |
| SB35434 | Colon Model - 6" x 2½" x 7¾" |
| SB45695 | GI Tract Anatomy Model - 6" x 2½" x 7¾" |
| SB46335 | Type 2 Diabetes Models - 10" Tall |
| SB46336 | Liver Model with Pathologies - 8" x 4½" x 5½" |
| SB46337 | Kidney Model with Pathologies - 3¾" x 2½" x 6½" |
| WA21315 | Kidney Model - 4" x 2½" x 6½" |
| SB41510 | Digestive System (3-Part) - 31⅞" x 13" x 3⅞" |
| SB47397 | Kidneys and Blood Filtration Kit |
| SB49200 | Urinary System Model - 14½" x 9" x 5" |



LA00203



SB45695



WA21315



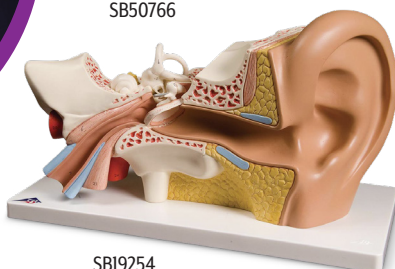
SB46335



SB19256



SB50766



SB19254

Eyes and ears

Study in detail how these specialized organs take in sensory information and transmit it to the nervous system.

Eyes and ears

| Product No. | Description |
|-------------|---|
| SB19256 | Classic Eye (6-Part) - 3½" x 3½" x 5⅞" |
| SB50766 | 4D Human™ Eyeball Model - 4½" |
| SB32980 | Ear Model - 3¾" x 2½" x 2¾" |
| SB19254 | Human Ear Anatomical Model - 13½" x 6¼" x 7⅞" |
| SB50767 | 4D Human™ Ear Model - 5" |

Teeth

Use these detailed training models to give students a close look into dental health and development.

Teeth

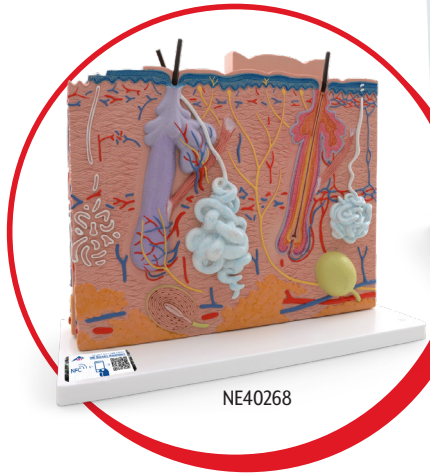
| Product No. | Description |
|----------------|--|
| SB48717 | Clear Human Jaw with Teeth - 3½" x 2¾" x 2½" |
| NE40272 | 3B Scientific Human Tooth Models - Set of 5 |



SB48717



NE40272



NE40268



SB46482

Skin

Show your students the layers and functions of the largest organ in the human body.

Skin

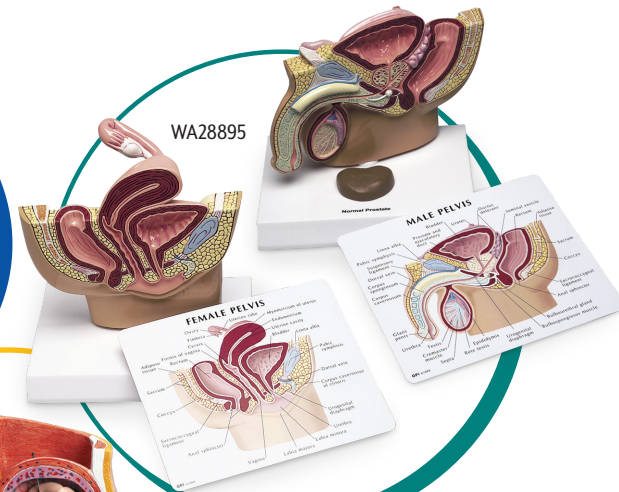
| Product No. | Description |
|----------------|--|
| NE40267 | 3B Scientific Microscopic Skin, Hair, & Nail Model |
| SB46482 | Skin Burn/Normal Model - 6" x 2½" x 4" |
| SB49202 | Skin Model - 11½" x 8½" x 10" |
| NE40268 | 3B Scientific Human Skin Model 80 Times Magnified |



SB47759



SB32704



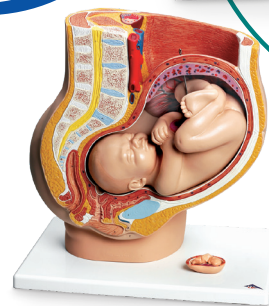
WA28895

Reproduction

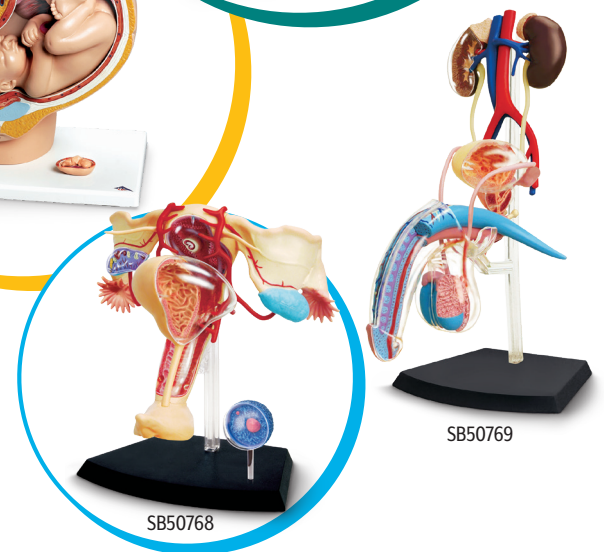
Learn how the male and female reproductive systems work and about each stage of fetal development.

Reproduction

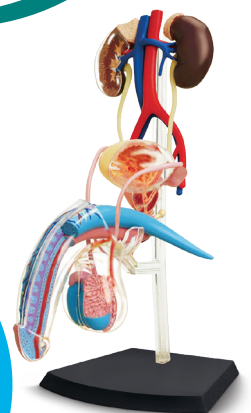
| Product No. | Description |
|----------------|---|
| SB32704 | Uterus/Fetus Model Set |
| SB35435 | Uterus Anatomy Model |
| SB23480 | Pregnant Woman Model |
| SB47759 | Fetus Development - Set of 8 Models - 4½" x 6" x 8" |
| SB50957 | Human Ovary Model |
| WA28895 | Human Pelvis Complete Model Set |
| SB32597 | Female Pelvis Model - 6¼" x 2¾" x 5½" |
| SB32598 | Male Pelvis Model - 6¼" x 2¾" x 5½" |
| SB50768 | 4D Human™ Female Reproductive System Model - 8" |
| SB50769 | 4D Human™ Male Reproductive System Model - 8" |



SB23480



SB50768

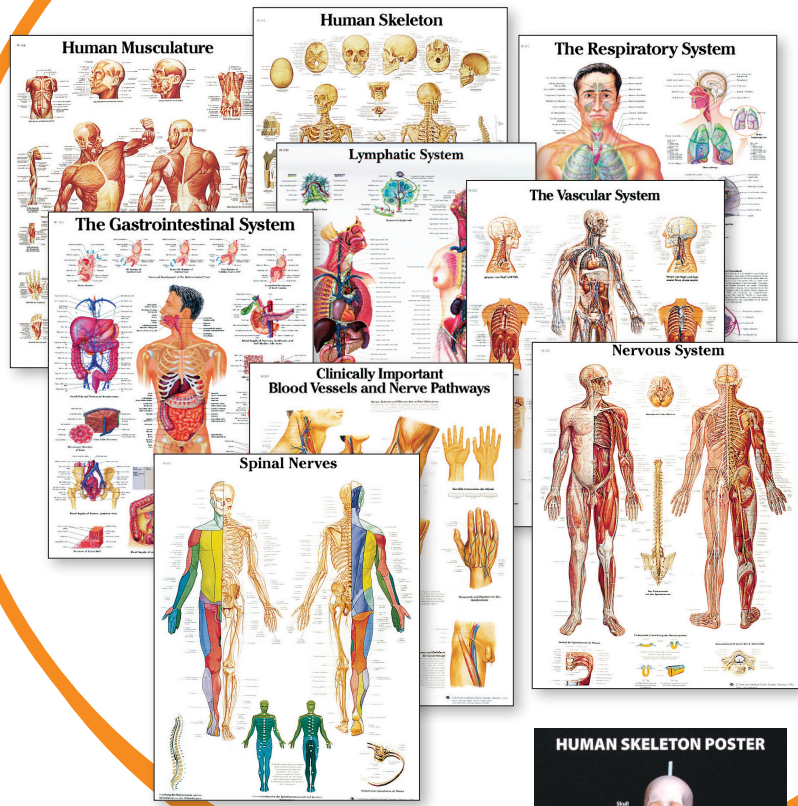


SB50769



Set of 10

SB33791



SB48741

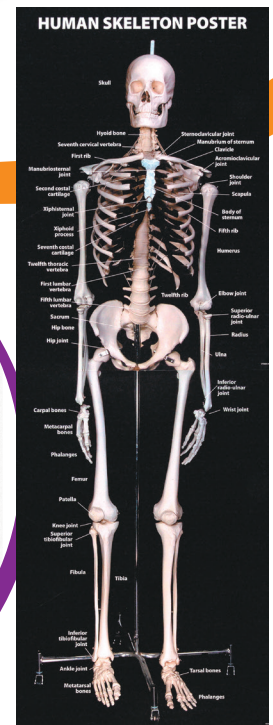
Resources

Supplement lessons with detailed charts, posters, and more.

| Resources | |
|-------------------------|--|
| Product No. | Description |
| SB35256 | Five Senses Posters - 17" x 22" - Set of 10 |
| SB33791 | Blueprint for Health Charts - 20" x 26" - Set of 9 |
| SB47571 | Magnetic Human Body - 3'H - 17 Pieces |
| SB28462 | Human Skeleton Photo - 54" Tall |
| SB46246 | Elementary Anatomy Posters - Set of 8 |
| SB48741 | 3B Scientific® Anatomical Charts - Set of 9 |
| SB41514 | 3B Scientific® Anatomical Chart for Human Skeleton |
| SB41520 | 3B Scientific® Anatomical Chart for Blood Vessels and Nerve Pathways |
| SB50334 | QuickStudy® Anatomy I Guide |



SB47571



SB28462

Experience the ease of a school-focused ordering process

Get the help you need to navigate bids, quotes, and co-op purchasing and qualify for discount pricing.

Our friendly staff will walk you through the ordering process, provide easy-to-understand billing, and offer individualized support.

Contact us at [1.800.558.9595](tel:1.800.558.9595) or custserv@nascoeducation.com